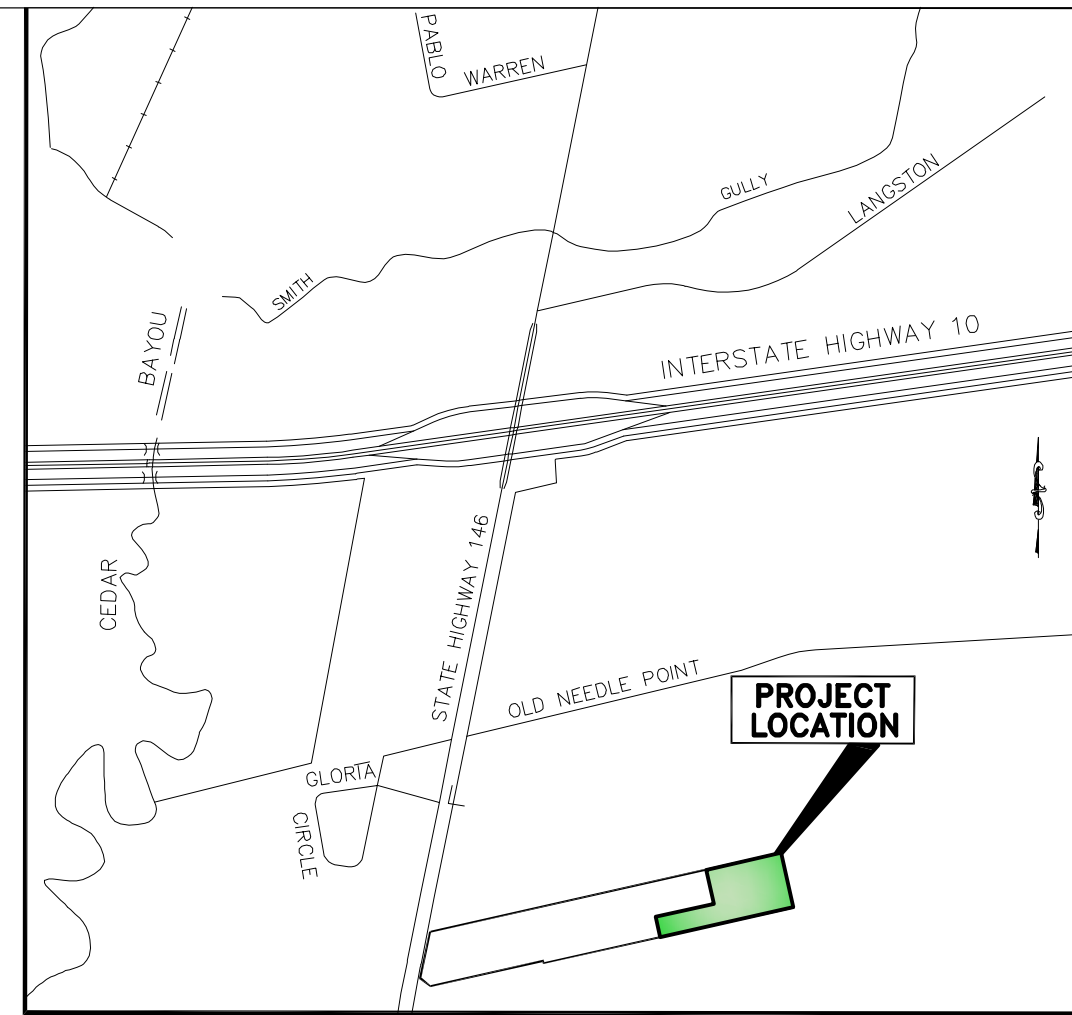
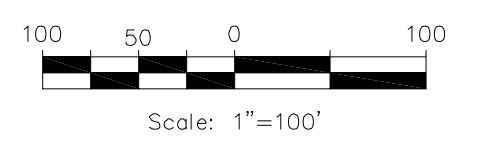
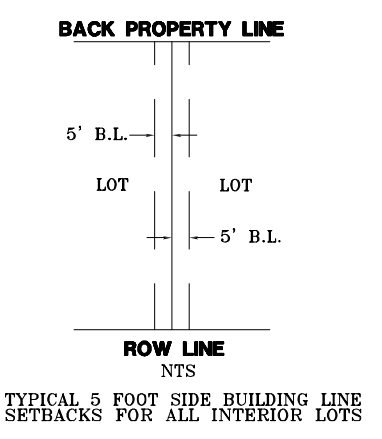


CURVE	RADIUS	ARC LENGTH	DELTA	TANGENT	CHORD	CHORD BEARING
C1	25.00	39.27	90°00'1"	25.00	35.36	N57°33'00"W
C2	25.00	39.27	89°59'59"	25.00	35.36	N32°27'00"E
C3	25.00	39.27	89°59'59"	25.00	35.36	S32°27'00"W
C4	25.00	39.27	90°00'1"	25.00	35.36	S57°33'00"E
C5	25.00	39.32	90°06'32"	25.05	35.39	N32°23'44"E
C9	25.00	21.03	48°11'23"	11.18	20.41	N38°45'14"W
C10	50.00	241.19	278°22'46"	44.72	66.67	S77°20'28"W
C11	25.00	21.03	48°11'23"	11.18	20.41	S11°26'09"W
C12	25.00	39.22	89°53'28"	24.95	35.32	S57°36'16"E
C13	25.00	39.32	90°06'32"	25.05	35.39	N32°23'44"E
C14	25.00	21.03	48°11'23"	11.18	20.41	N38°45'14"W
C17	50.00	241.19	278°22'46"	44.72	66.67	S77°20'28"W
C22	25.00	21.03	48°11'23"	11.18	20.41	S11°26'09"W
C23	25.00	39.22	89°53'28"	24.95	35.32	S57°36'16"E
C24	30.00	47.18	90°03'38"	30.03	42.45	N32°22'17"W
C25	90.00	141.47	90°03'38"	90.10	127.35	S32°22'17"W
C26	75.00	117.73	89°56'22"	74.92	106.01	N57°37'43"W
C27	75.00	117.95	90°06'32"	75.14	106.17	N32°23'44"E
C28	25.00	39.32	90°06'32"	25.05	35.39	S32°23'44"W
C29	25.00	39.22	89°53'28"	24.95	35.32	S57°36'16"E
C30	25.00	39.32	90°06'32"	25.05	35.39	N32°23'44"E
C31	25.00	39.22	89°53'28"	24.95	35.32	N57°36'16"W
C32	75.00	117.67	89°53'28"	74.86	105.57	S57°36'16"E
C33	25.00	39.24	89°56'22"	24.97	35.34	N57°37'43"W
C34	25.00	39.30	90°03'38"	25.03	35.37	S32°22'17"W
C35	25.00	21.03	48°11'23"	11.18	20.41	S38°45'14"E
C36	50.00	241.19	278°22'46"	44.72	66.67	N77°20'28"E
C37	25.00	21.03	48°11'23"	11.18	20.41	N11°26'09"E
C38	25.00	39.24	89°56'22"	24.97	35.34	N57°37'43"W
C39	30.00	47.16	90°03'38"	30.03	42.45	S32°22'17"W
C40	90.00	141.54	90°06'32"	90.17	127.40	N32°23'44"E
C41	60.00	94.36	90°06'32"	60.11	84.93	N32°23'44"E
C42	60.00	94.31	90°03'38"	60.06	84.90	S32°22'17"W
C43	25.00	39.30	90°03'38"	25.03	35.37	S32°22'17"W
C44	25.00	39.24	89°56'22"	24.97	35.34	N57°37'43"W
C45	25.00	21.03	48°11'23"	11.18	20.41	N11°26'09"E
C46	50.00	241.19	278°22'46"	44.72	66.67	N77°20'28"E
C47	25.00	21.03	48°11'23"	11.18	20.41	S38°45'14"E
C48	25.00	39.30	90°03'38"	25.03	35.37	S32°22'17"W
C49	25.00	39.24	89°56'22"	24.97	35.34	N57°37'43"W
C50	25.00	21.03	48°11'23"	11.18	20.41	N11°26'09"E
C51	50.00	241.19	278°22'46"	44.72	66.67	N77°20'28"E
C52	25.00	21.03	48°11'23"	11.18	20.41	S38°45'14"E
C53	25.00	39.30	90°03'38"	25.03	35.37	S32°22'17"W
C54	25.00	39.24	89°56'22"	24.97	35.34	N57°37'43"W
C55	25.00	39.32	90°06'32"	25.05	35.39	N32°23'44"E
C56	50.00	78.63	90°06'32"	50.10	70.78	N32°23'44"E
C57	50.00	78.44	89°53'28"	49.91	70.64	S57°36'16"E
C58	25.00	39.22	89°53'28"	24.95	35.32	S57°36'16"E
C59	50.00	78.49	89°56'22"	49.95	70.67	N57°37'43"W



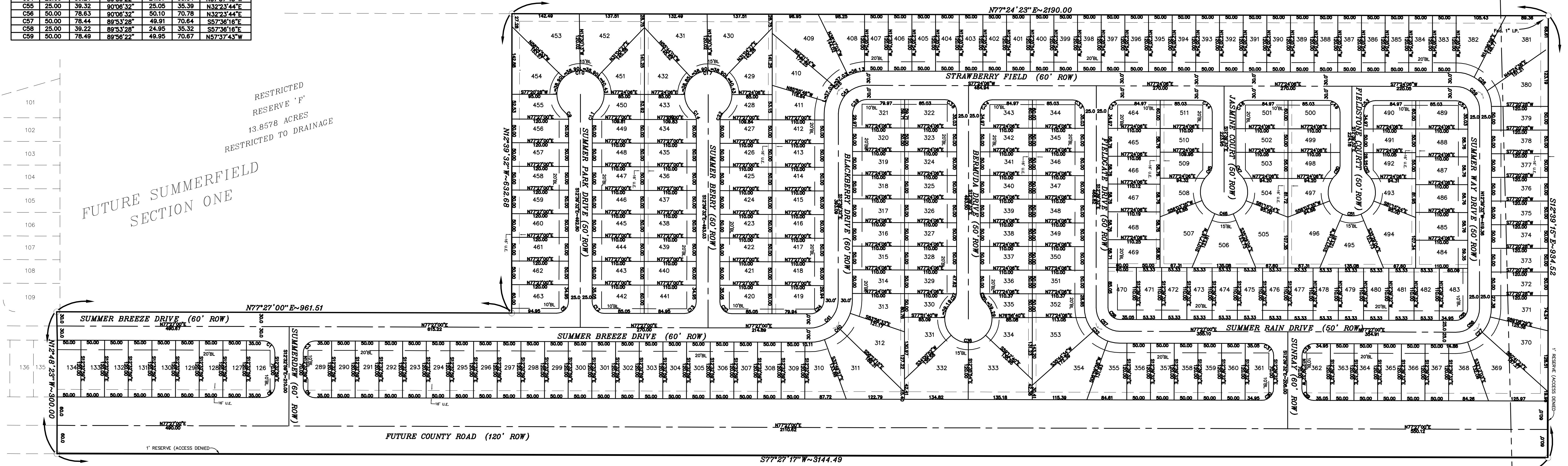
LOCATION MAP
N.T.S.

DAVID KADJAR, TRUSTEE
80.99 ACRES

WILLIAM BLOODGOOD
AUGMENTATION,
A-5

CHAMBERS COUNTY SCHOOL
LAND SURVEY, NUMBER 3
A-321

RESTRICTED
RESERVE 'F'
13.8578 ACRES
RESTRICTED TO DRAINAGE
FUTURE SUMMERFIELD
SECTION ONE



B. B. B. & C. R.R. COMPANY
SURVEY, NUMBER 5
A-61

PRELIMINARY PLAT OF
SUMMERFIELD
SECTION TWO
232 LOTS, MIN. 50' X 110'
YIELDS 4.3 LOTS PER ACRE

A SUBDIVISION OF 53.5494 ACRES
LOCATED IN THE

CHAMBERS COUNTY SCHOOL LAND SURVEY, NUMBER 3 A-321 AND THE
WILLIAM BLOODGOOD AUGMENTATION SURVEY, A-5
CHAMBERS COUNTY, TEXAS

UNITED TEXAS TRANSMISSION
4.74 ACRES

THIS PLAT IS NOT ELIGIBLE, NOR AUTHORIZED, TO
BE RECORDED IN ANY COUNTY RECORDS AND THAT
FILING OF A PRELIMINARY PLAT SHALL BE PRIMA
FACIE EVIDENCE OF FRAUDULENT FILING UNDER
THE TEXAS PROPERTY CODE SUBJECT TO THE
PENALTIES THEREUNDER.

**Cobb
Fendley
ASSOCIATES**
ENGINEER / SURVEYOR
13430 N.W. FRWY. SUITE 1100
HOUSTON, TEXAS 77040
(713) 462-3242

OWNER
THE MAVERICK GROUP, LLP
4455 S. COMMERCE AVE.
BATON ROUGE, LOUISIANA 70815

SCALE: 1"=100' DATE: APRIL, 2006