

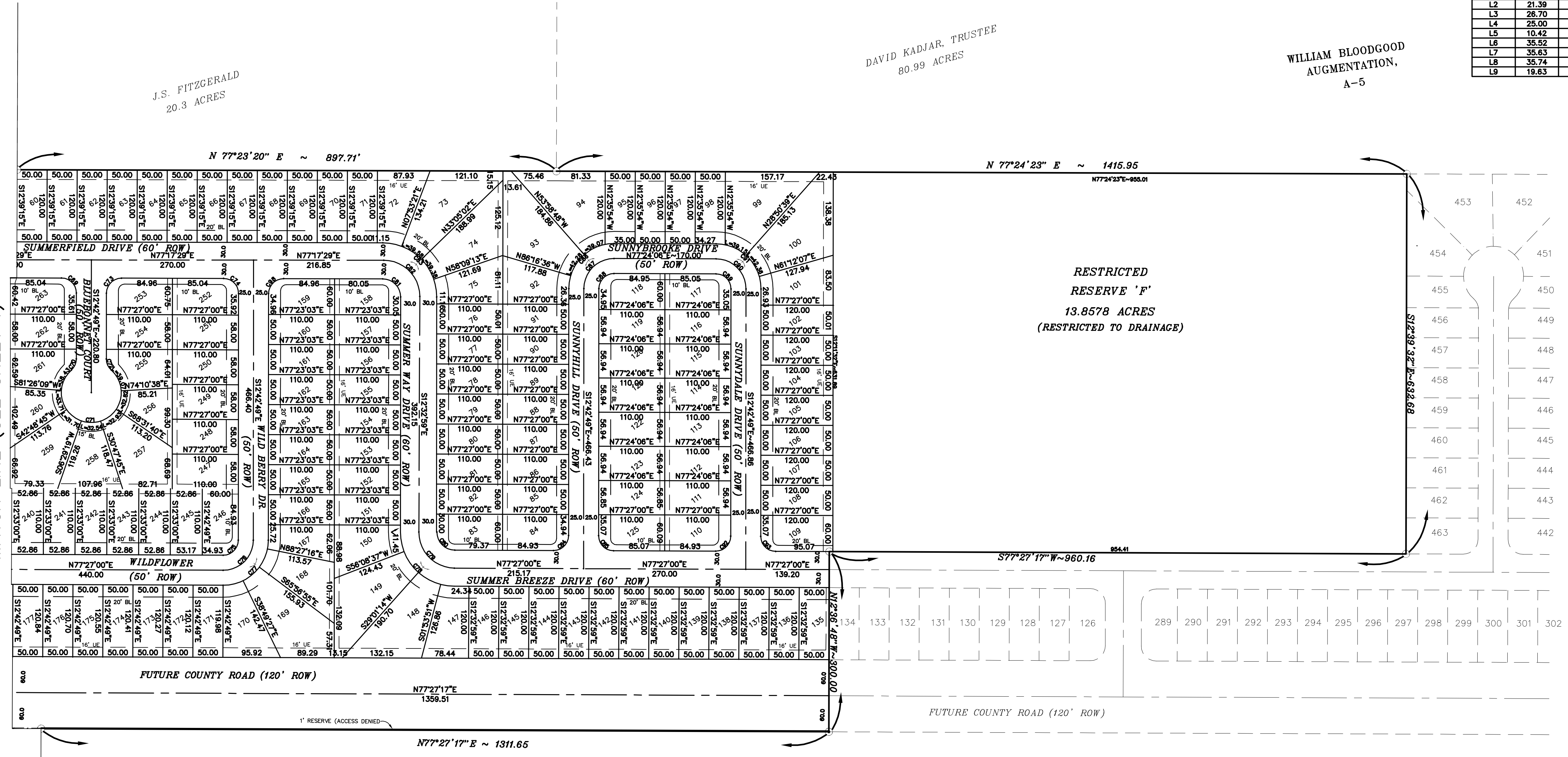
LINE	LENGTH	BEARING
L1	21.28	S56°35'32"W
L2	21.39	N34°04'33"W
L3	26.70	N43°24'49"E
L4	25.00	S11°25'01"W
L5	10.42	S42°35'54"W
L6	35.52	S77°32'34"W
L7	35.63	S77°32'34"W
L8	35.74	S77°32'34"W
L9	19.63	N11°10'17"E

LOCATION MAP
N.T.S.

DAVID KADJAR, TRUSTEE
80.99 ACRES

WILLIAM BLOODGOOD
AUGMENTATION,
A-5

J.S. FITZGERALD
20.3 ACRES



CURVE	RADIUS	ARC LENGTH	DELTA	TANGENT	CHORD	CHORD BEARING
C1	2000.00	836.03	23°57'02"	424.21	829.96	N89°26'30"E
C2	1940.00	724.93	21°24'36"	366.74	720.72	N88°10'17"E
C3	2060.00	861.11	23°57'02"	436.84	854.86	N89°26'30"E
C4	75.00	148.07	11°30'05"	113.57	125.17	S45°57'59"E
C5	50.00	159.29	18°32'01"	226.13	99.88	S45°35'11"E
C9	50.00	98.72	11°30'05"	75.72	83.48	S45°57'59"E
C10	50.00	241.19	27°22'46"	44.72	66.67	N12°31'31"W
C11	100.00	35.46	20°19'11"	17.92	35.28	S00°25'58"W
C12	25.00	23.74	54°24'27"	12.85	22.86	N17°28'36"E
C13	25.00	23.74	54°24'27"	12.85	22.86	S69°21'02"W
C14	100.00	33.51	19°05'17"	18.81	33.16	N87°00'37"E
C17	25.00	21.03	48°11'23"	11.18	20.41	N53°22'41"E
C22	25.00	21.03	48°11'23"	11.18	20.41	N78°25'50"W
C23	50.00	78.54	90°00'00"	50.00	70.71	S32°17'29"W
C24	75.00	117.81	90°00'00"	75.00	106.07	S32°17'29"W
C25	25.00	39.27	90°00'00"	25.00	35.36	S32°17'29"W
C26	25.00	21.03	48°11'23"	11.18	20.41	S36°48'13"E
C27	50.00	241.19	27°22'46"	44.72	66.67	N77°17'29"E
C28	25.00	21.03	48°11'23"	11.18	20.41	N11°23'10"E
C29	25.00	39.27	90°00'00"	25.00	35.36	N57°42'31"W
C30	25.00	39.27	90°00'00"	25.00	35.36	S32°17'29"W
C31	75.00	86.23	65°52'28"	48.59	81.56	S45°38'45"E
C32	50.00	57.49	65°52'28"	32.39	54.37	S45°38'45"E
C33	25.00	28.74	65°52'28"	16.20	27.19	S45°38'45"E
C34	25.00	30.77	70°31'44"	17.68	28.67	N68°08'08"E
C35	50.00	218.63	29°31'44"	70.71	81.65	S28°29'51"W
C36	275.00	223.31	48°31'53"	118.22	217.22	N78°28'45"W
C37	250.00	248.75	57°00'33"	135.77	238.61	N74°12'15"W
C38	225.00	163.93	41°44'42"	85.80	160.33	N81°50'10"W
C39	25.00	44.14	101°09'48"	30.42	38.63	N10°22'55"W
C40	750.00	379.98	29°01'42"	194.16	375.83	S25°41'08"W
C41	620.00	340.07	31°25'37"	174.43	335.82	S26°33'08"W
C42	550.00	293.48	30°34'23"	150.32	290.01	S27°27'29"W
C43	25.00	33.62	77°03'28"	19.91	31.15	N85°17'18"E
C44	650.00	346.37	30°31'55"	177.40	342.29	S62°01'31"W
C45	620.00	375.41	34°41'35"	193.66	369.71	S58°56'41"W
C46	590.00	331.24	32°10'00"	170.11	326.90	S59°30'21"W
C47	25.00	40.01	91°41'49"	25.75	35.88	N63°34'44"W
C48	25.00	38.42	89°03'46"	24.17	34.75	N51°19'04"E
C49	470.00	261.90	31°55'38"	134.44	258.52	S59°30'09"W
C50	430.00	193.85	25°49'49"	98.60	192.22	S28°49'46"W
C51	25.00	19.65	45°01'28"	10.36	19.14	N38°25'36"E
C52	50.00	232.48	288°24'03"	53.24	72.90	S82°03'03"E
C53	25.00	22.70	52°01'55"	12.20	21.93	S09°14'07"E
C54	408.27	211.87	29°52'48"	108.40	209.48	S26°08'08"W
C55	445.00	206.31	38°09'04"	103.88	200.67	S62°29'33"W
C56	420.00	228.82	31°21'58"	117.92	227.06	S59°10'33"W
C57	381.27	161.86	24°19'25"	82.17	160.65	S28°50'13"W
C58	25.00	40.33	92°25'40"	26.08	36.10	N58°55'39"W
C59	25.00	39.38	90°15'23"	25.11	35.43	N32°24'52"E
C60	50.00	157.08	180°00'00"	INFINITE	100.00	S12°27'28"E
C61	75.00	118.15	90°15'23"	75.34	108.30	N32°24'52"E
C62	50.00	78.76	90°15'23"	50.22	70.67	N32°24'52"E
C63	25.00	39.27	90°00'18"	25.00	35.36	S32°17'20"W
C64	25.00	39.27	89°59'42"	25.00	35.35	N57°42'40"W
C65	75.00	117.57	89°49'12"	74.76	105.90	S57°37'25"E
C66	50.00	78.40	89°50'11"	49.86	70.61	S57°37'55"E
C67	25.00	39.20	89°50'11"	24.93	35.30	S57°37'55"E
C68	25.00	39.27	90°00'18"	25.00	35.36	S32°17'20"W
C69	25.00	39.23	89°54'08"	24.96	35.33	N57°39'53"W
C70	25.00	21.03	48°11'23"	11.18	20.41	N11°22'52"E
C71	50.00	241.19	27°22'46"	44.72	66.67	N77°17'11"E
C72	25.00	21.03	48°11'23"	11.18	20.41	S36°48'31"E
C73	25.00	39.31	90°05'52"	25.04	35.39	S32°20'07"W
C74	25.00	39.23	89°54'08"	24.96	35.33	N57°39'53"W
C75	25.00	39.34	90°08'49"	25.07	35.42	N32°22'05"E
C76	50.00	78.68	89°54'08"	50.14	70.81	N57°39'53"W
C77	75.00	118.02	90°08'49"	75.21	106.22	N32°22'05"E
C78	90.00	141.11	89°50'11"	89.74	127.10	S57°37'55"E
C79	60.00	94.25	90°00'01"	60.00	84.85	S57°33'00"E
C80	30.00	47.12	90°00'01"	30.00	42.43	S57°33'00"E
C81	30.00	47.07	89°54'08"	29.95	42.39	N57°39'53"W
C82	60.00	94.41	90°08'49"	60.17	84.97	N32°22'05"E
C83	90.00	141.22	89°54'08"	89.85	127.17	N57°39'53"W
C84	25.00	39.34	90°08'49"	25.07	35.41	N32°22'05"E
C85	25.00	39.20	89°50'11"	24.93	35.30	S57°37'55"E
C86	75.00	117.96	90°06'55"	75.15	106.17	S32°20'38"W
C87	50.00	78.64	90°06'55"	50.10	70.78	S32°20'38"W
C88	25.00	39.32	90°06'55"	25.05	35.39	S32°20'38"W
C89	25.00	39.22	89°53'05"	24.95	35.32	N57°39'22"W
C90	50.00	78.44	89°53'05"	49.90	70.64	N57°39'22"W
C91	75.00	117.66	89°53'05"	74.85	105.96	N57°39'22"W
C92	25.00	39.34	90°09'49"	25.07	35.41	N32°22'05"E
C93	25.00	39.20	89°50'11"	24.93	35.30	S57°37'55"E
C94	25.00	39.38	90°14'44"	25.11	35.43	N56°17'39"E
C95	25.00	40.31	92°23'41"	26.07	36.08	S39°01'33"E
C96	25.00	38.91	89°10'33"	24.64	35.10	N33°59'43"W
C97	25.00	38.63	90°49'27"	25.36	35.61	S68°00'17"W
C98	25.00	39.31	90°05'52"	25.04	35.39	S32°20'07"W

PRELIMINARY PLAT
OF
SUMMERFIELD
SECTION ONE
279 LOTS, 6 RESERVES
MIN. 50' X 110'
YIELDS 3.2 LOTS PER ACRE
A SUBDIVISION OF 87.4136 ACRES
LOCATED IN THE
WILLIAM BLOODGOOD AUGMENTATION SURVEY, A-5
CHAMBERS COUNTY, TEXAS

B. B. & C. R.R. COMPANY
SURVEY, NUMBER 5
A-61

THIS PLAT IS NOT ELIGIBLE NOR AUTHORIZED TO BE RECORDED IN ANY COUNTY RECORDS AND THAT FILING OF A PRELIMINARY PLAT SHALL BE PRIMA FACIE EVIDENCE OF A FRAUDULENT FILING UNDER THE TEXAS PROPERTY CODE SUBJECT TO THE PENALTIES THEREUNDER.

Cobb Fendley
ASSOCIATES
ENGINEER / SURVEYOR
13430 N.W. FRWY. SUITE 1100
HOUSTON, TEXAS 77040
(713) 462-3242

OWNER
THE MAVERICK GROUP, LLP
4455 S. COMMERCE AVE.
BATON ROUGE, LOUISIANA 70815